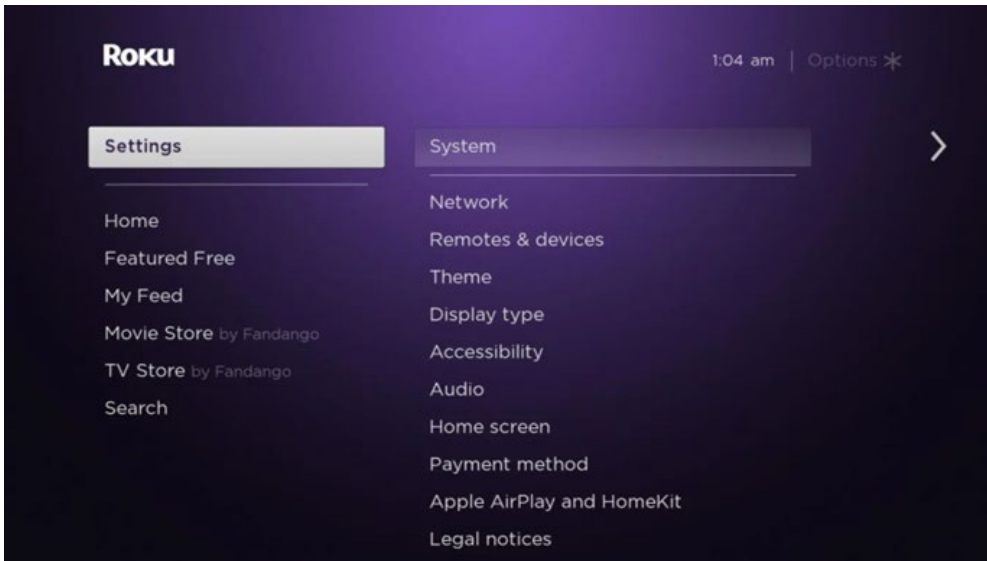


How do I update my Roku TV– Updated Sept. 2023

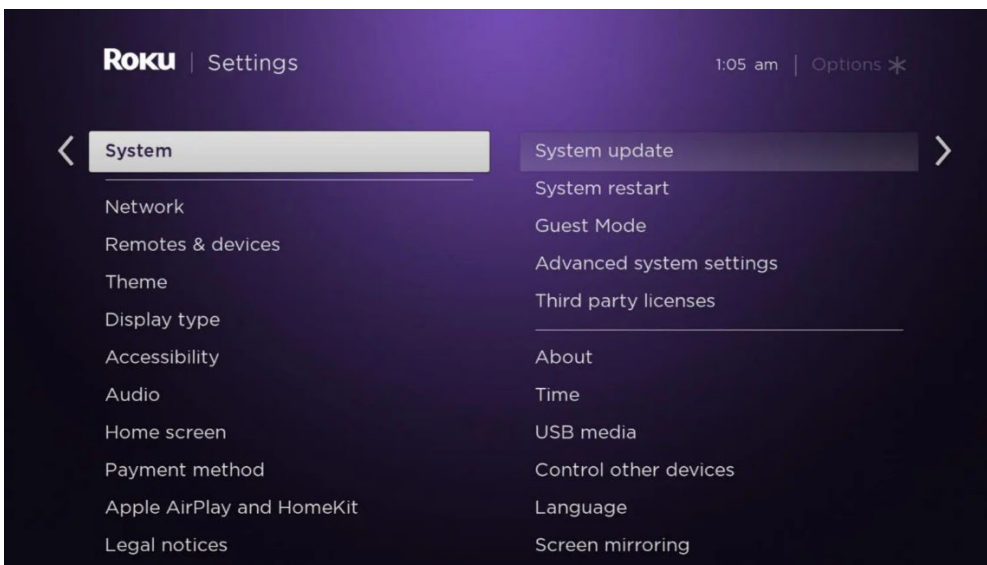
Step 1: Press the **Home button** on your Roku remote. This button has a house-shaped logo at the top of your remote.

Step 2: Then press the left directional button. This will bring you to the menu bar on the left side of your screen.

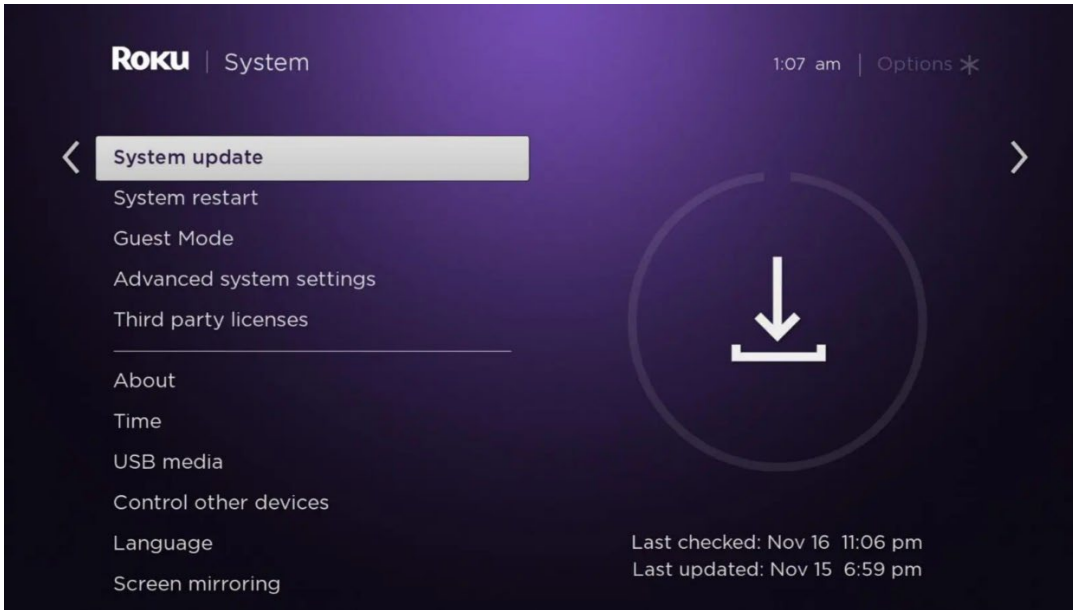
Step 3: Next, go to **Settings**. You can do this by pressing the up-directional button on your remote once. Then press the **OK** button in the middle of your remote to select Settings once it is highlighted.



Step 4: Then select **System**. You can do this by pressing the up directional button on your remote once and then pressing the **OK** button.



Step 5: Next, go to **System Update**. You can do this by pressing the **OK** button or the right directional button once System Update is highlighted.



Step 6: Finally, wait for your Roku device to update. Your device might restart during the update process. Make sure not to unplug it until the update is finished.

Troubleshooting Updates

If you encounter any problems during the update process, try these troubleshooting tips:

- **Check your Roku device's storage space.** Ensure your device has enough free space to accommodate the latest software update. Overcrowding your device's storage can create conflicts and prevent updates from being installed.
- **Unplug your Roku device.** If your device seems stuck in the update process, unplug it from the power source and plug it back in after a few minutes.